

## **Teresa Knott**

---

**From:** Percy Ashcraft  
**Sent:** Tuesday, October 26, 2021 4:37 PM  
**To:** Paul Beamon  
**Cc:** Teresa Knott  
**Subject:** RE: Update on construction projects

Please plan to keep this updated and then put in the BOS packet for your presentation on November 9.

*Percy C. Ashcraft*

County Administrator  
Prince George County  
6602 Courts Drive  
Prince George, VA 23875  
Cell – (804) 892-6724  
Office – (804) 722-8601

---

**From:** Paul Beamon  
**Sent:** Tuesday, October 26, 2021 3:38 PM  
**To:** Percy Ashcraft  
**Subject:** Update on construction projects

Mr. Ashcraft, just a quick email to illustrate where we are on the station projects we are working on.

I have requested and suggested the following schedules for the pending projects, and expect to receive final confirmation from DJG tomorrow.

### Fire Station 1:

Charrette conducted on 7/19  
Draft Charrette Minutes received on 8/2; no comments were sent by myself or Foster  
Draft Floor plan received 9/15  
Draft Feasibility Study received 9/17 (no Civil) and 9/20 (complete with Civil)  
Review meeting held at station 1 10/5 but had to be rescheduled due to issues with email invite to Foster  
Review meeting held at Station 1 on 10/20; new floor and site plans requested by myself and Foster  
Final Feasibility Study is set to be sent to be by DJG on 11/11 (Timmons not yet notified and will need to confirm; Geotech testing could affect final date)

### Fire Station 5:

Schematic Plan submitted 9/10; comments given and received during phone conversation and documented 9/15 by me  
Color selections submitted to me at the Station 1 meeting on 10/20  
60% completion of ADJ drawings and suggestions are scheduled to be sent to me by 10/29  
We will review and meet with DJG virtually or in person by 11/12 (not yet set up but all are aware)  
PreFinal Set to be provided to me by 12/10

We will review and return comments to DGJ by 12/17, if not before.  
Bid Documents to be sent to me by 1/14/21

Fire Station 8:

90% is set to be sent to us by 11/1  
We will review and return comments to DJG by 11/5  
Bid Documents to be sent to us 11/19

I've attached the Proposal for Fire Station 5 for your reference. As you can see, it outlines program goals, deliverables, and exclusions, but not dates. Dates at the time of the proposal would have only been an estimate and while they have been accomplishing the work outlined in the proposal, they have apologize for the delays and I have expressed my concerns and need to have these projects pushed forward so that I may revisit new ones. I hope that this schedule will be acceptable, and put any fears to rest that no progress has been made.



Paul Beamon MPA, CCEMTP  
Chief of Fire, EMS, & Emergency Management  
Prince George County  
6602 Courts Drive  
Prince George, VA 23875  
Phone – (804) 722-8614  
Cell - (678) 588-8399  
[pbeamon@princegeorgecountyva.gov](mailto:pbeamon@princegeorgecountyva.gov)

[illegible]

**FLOOR PLAN -  
DEMOLITION**

AD-101

2 of 25

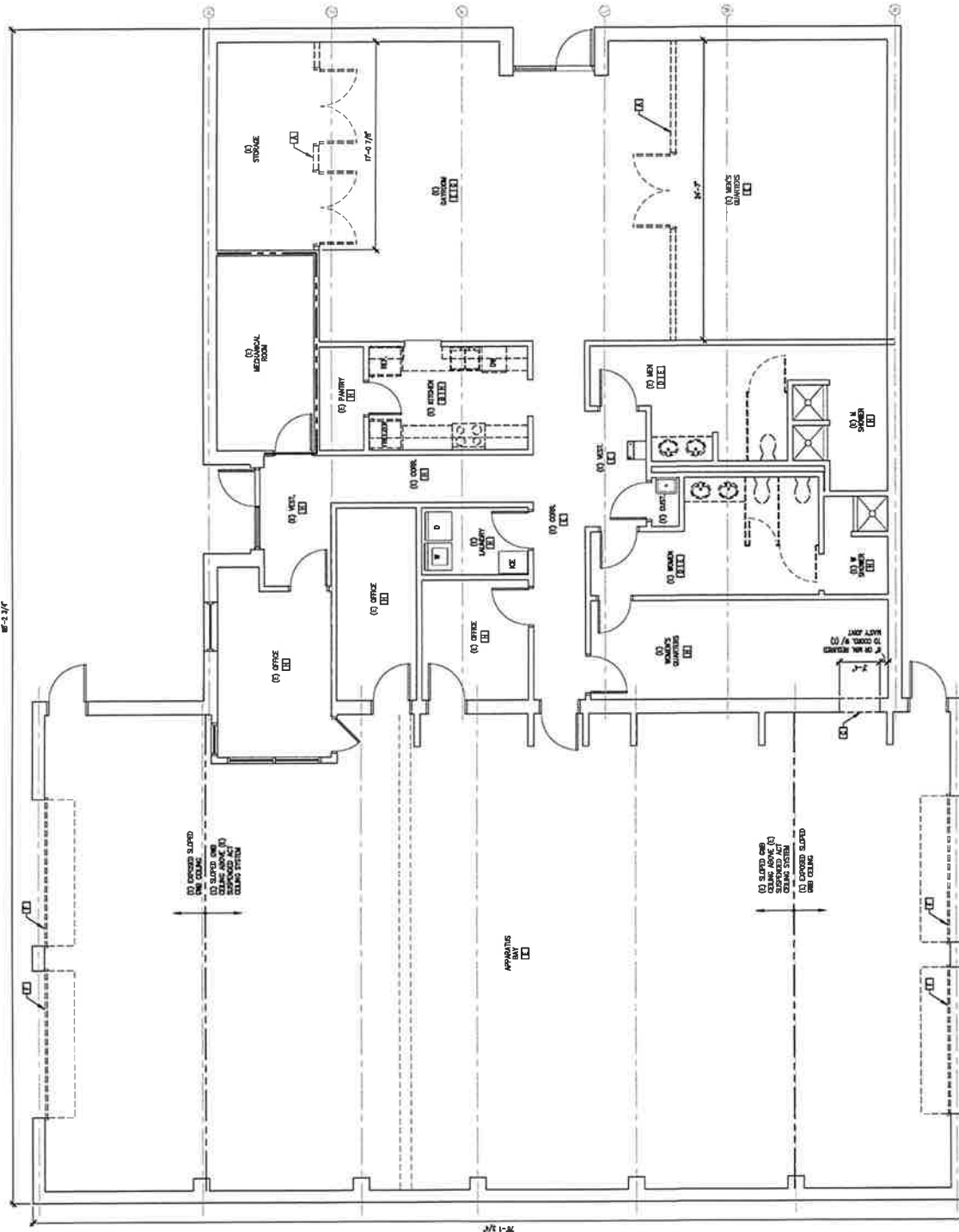
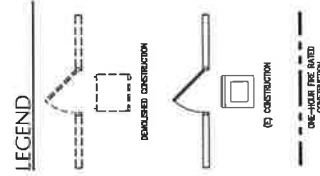
## DEMOLITION GENERAL

## NOTES:

- [illegible]

## DEMOLITION KEYED NOTES:

- [illegible]



POWER DEMOLITION PLAN

20-1 - 2/1 3MCS



PROJECT NORTH



ENGINEERS  
ARCHITECTS  
PLANNERS

449 MILANS CIRCLE  
WILLIAMSBURG, VA 23180  
(757) 283-2318 FAX  
WWW.DJGJAC.COM

60% SET

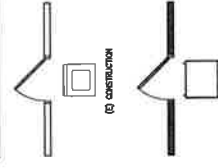
NOT FOR  
CONSTRUCTION

PRINCE GEORGE  
COUNTY, VA

FIRE STATION #5  
EXISTING  
BUILDING  
REPAIRS &  
RENOVATIONS

REVISIONS

LEGEND



FLOOR PLAN -  
NEW WORK

A-101  
3 OF 25

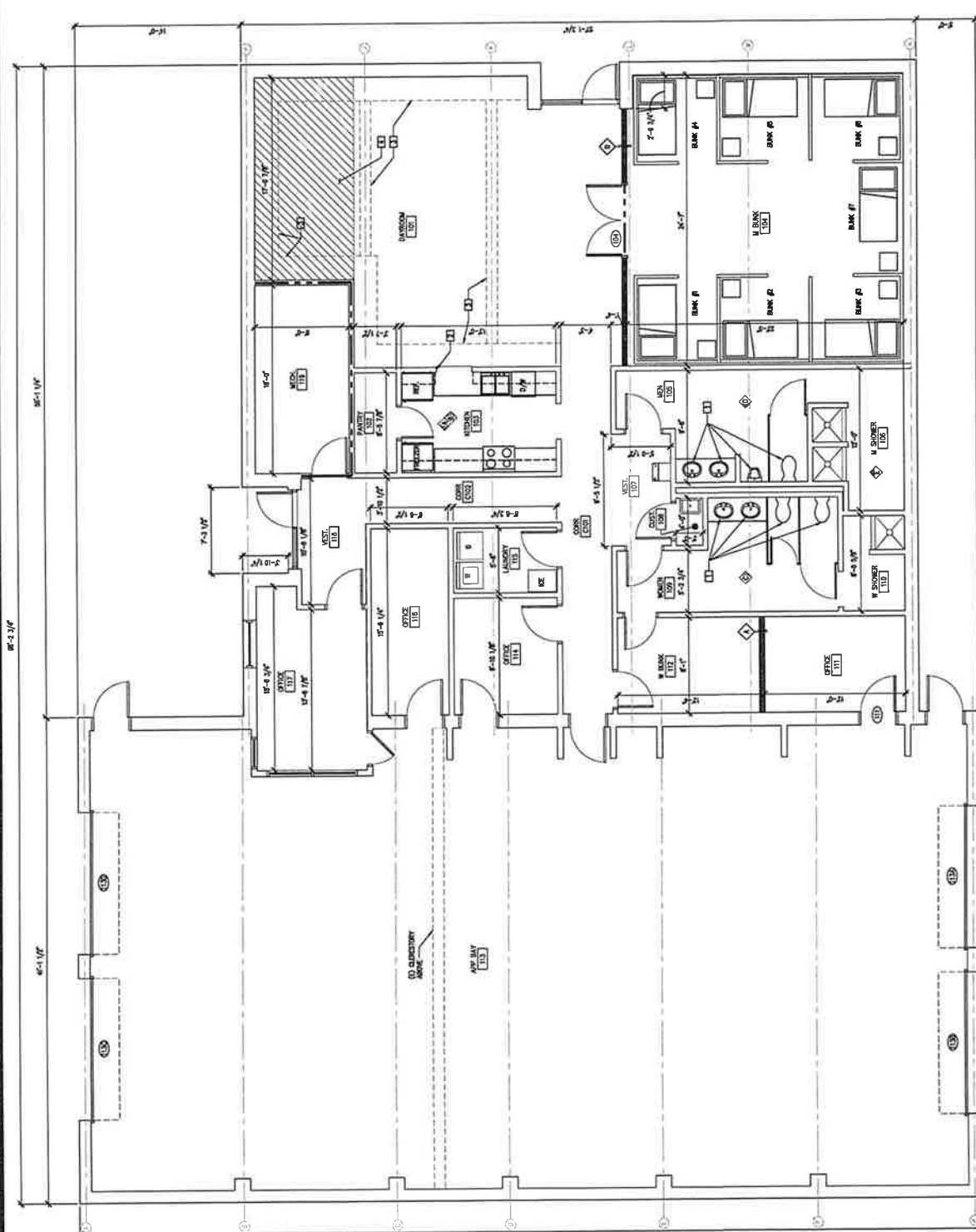
GENERAL NOTES

1. CONTRACTOR SHALL VERIFY ALL DIMENSIONS TO EXISTING CONDITIONS.
2. CONTRACTOR SHALL VERIFY EXISTING UTILITIES BY OWNER & SCHEDULE ALL UTILITY DAMAGES BEFOREREDIGGING.
3. ALL FLOOR PLAN DIMENSIONS TO EXISTING CONDITIONS UNLESS NOTED OTHERWISE. DIMENSIONS TO FACE UNLESS NOTED OTHERWISE. DIMENSIONS TO FACE OF STUD. TYPICAL UNLESS NOTED OTHERWISE.
4. MAKE DIMENSIONAL METALS ARE IN DIRECT PHYSICAL CONTACT. PROVIDE ADEQUATE SEPARATION, TO PREVENT CONTACT WITH OTHER METALS.
5. SEE SHEET A-102 FOR WALL TYPES.
6. REFER TO SHEET A-101 FOR INTERIOR ELEVATIONS.

KEYED NOTES:

- (1) FINISH & (2) FINISH CONNECTION - SEE FINISH SCHEDULE.
- (3) FINISH - SEE FINISH SCHEDULE.
- (4) FINISH - SEE FINISH SCHEDULE.
- (5) FINISH - SEE FINISH SCHEDULE.
- (6) FINISH - SEE FINISH SCHEDULE.
- (7) FINISH - SEE FINISH SCHEDULE.
- (8) FINISH - SEE FINISH SCHEDULE.
- (9) FINISH - SEE FINISH SCHEDULE.
- (10) FINISH - SEE FINISH SCHEDULE.
- (11) FINISH - SEE FINISH SCHEDULE.
- (12) FINISH - SEE FINISH SCHEDULE.
- (13) FINISH - SEE FINISH SCHEDULE.
- (14) FINISH - SEE FINISH SCHEDULE.
- (15) FINISH - SEE FINISH SCHEDULE.
- (16) FINISH - SEE FINISH SCHEDULE.
- (17) FINISH - SEE FINISH SCHEDULE.
- (18) FINISH - SEE FINISH SCHEDULE.
- (19) FINISH - SEE FINISH SCHEDULE.
- (20) FINISH - SEE FINISH SCHEDULE.
- (21) FINISH - SEE FINISH SCHEDULE.
- (22) FINISH - SEE FINISH SCHEDULE.
- (23) FINISH - SEE FINISH SCHEDULE.
- (24) FINISH - SEE FINISH SCHEDULE.
- (25) FINISH - SEE FINISH SCHEDULE.
- (26) FINISH - SEE FINISH SCHEDULE.
- (27) FINISH - SEE FINISH SCHEDULE.
- (28) FINISH - SEE FINISH SCHEDULE.
- (29) FINISH - SEE FINISH SCHEDULE.
- (30) FINISH - SEE FINISH SCHEDULE.
- (31) FINISH - SEE FINISH SCHEDULE.
- (32) FINISH - SEE FINISH SCHEDULE.
- (33) FINISH - SEE FINISH SCHEDULE.
- (34) FINISH - SEE FINISH SCHEDULE.
- (35) FINISH - SEE FINISH SCHEDULE.
- (36) FINISH - SEE FINISH SCHEDULE.
- (37) FINISH - SEE FINISH SCHEDULE.
- (38) FINISH - SEE FINISH SCHEDULE.
- (39) FINISH - SEE FINISH SCHEDULE.
- (40) FINISH - SEE FINISH SCHEDULE.
- (41) FINISH - SEE FINISH SCHEDULE.
- (42) FINISH - SEE FINISH SCHEDULE.
- (43) FINISH - SEE FINISH SCHEDULE.
- (44) FINISH - SEE FINISH SCHEDULE.
- (45) FINISH - SEE FINISH SCHEDULE.
- (46) FINISH - SEE FINISH SCHEDULE.
- (47) FINISH - SEE FINISH SCHEDULE.
- (48) FINISH - SEE FINISH SCHEDULE.
- (49) FINISH - SEE FINISH SCHEDULE.
- (50) FINISH - SEE FINISH SCHEDULE.
- (51) FINISH - SEE FINISH SCHEDULE.
- (52) FINISH - SEE FINISH SCHEDULE.
- (53) FINISH - SEE FINISH SCHEDULE.
- (54) FINISH - SEE FINISH SCHEDULE.
- (55) FINISH - SEE FINISH SCHEDULE.
- (56) FINISH - SEE FINISH SCHEDULE.
- (57) FINISH - SEE FINISH SCHEDULE.
- (58) FINISH - SEE FINISH SCHEDULE.
- (59) FINISH - SEE FINISH SCHEDULE.
- (60) FINISH - SEE FINISH SCHEDULE.
- (61) FINISH - SEE FINISH SCHEDULE.
- (62) FINISH - SEE FINISH SCHEDULE.
- (63) FINISH - SEE FINISH SCHEDULE.
- (64) FINISH - SEE FINISH SCHEDULE.
- (65) FINISH - SEE FINISH SCHEDULE.
- (66) FINISH - SEE FINISH SCHEDULE.
- (67) FINISH - SEE FINISH SCHEDULE.
- (68) FINISH - SEE FINISH SCHEDULE.
- (69) FINISH - SEE FINISH SCHEDULE.
- (70) FINISH - SEE FINISH SCHEDULE.
- (71) FINISH - SEE FINISH SCHEDULE.
- (72) FINISH - SEE FINISH SCHEDULE.
- (73) FINISH - SEE FINISH SCHEDULE.
- (74) FINISH - SEE FINISH SCHEDULE.
- (75) FINISH - SEE FINISH SCHEDULE.
- (76) FINISH - SEE FINISH SCHEDULE.
- (77) FINISH - SEE FINISH SCHEDULE.
- (78) FINISH - SEE FINISH SCHEDULE.
- (79) FINISH - SEE FINISH SCHEDULE.
- (80) FINISH - SEE FINISH SCHEDULE.
- (81) FINISH - SEE FINISH SCHEDULE.
- (82) FINISH - SEE FINISH SCHEDULE.
- (83) FINISH - SEE FINISH SCHEDULE.
- (84) FINISH - SEE FINISH SCHEDULE.
- (85) FINISH - SEE FINISH SCHEDULE.
- (86) FINISH - SEE FINISH SCHEDULE.
- (87) FINISH - SEE FINISH SCHEDULE.
- (88) FINISH - SEE FINISH SCHEDULE.
- (89) FINISH - SEE FINISH SCHEDULE.
- (90) FINISH - SEE FINISH SCHEDULE.
- (91) FINISH - SEE FINISH SCHEDULE.
- (92) FINISH - SEE FINISH SCHEDULE.
- (93) FINISH - SEE FINISH SCHEDULE.
- (94) FINISH - SEE FINISH SCHEDULE.
- (95) FINISH - SEE FINISH SCHEDULE.
- (96) FINISH - SEE FINISH SCHEDULE.
- (97) FINISH - SEE FINISH SCHEDULE.
- (98) FINISH - SEE FINISH SCHEDULE.
- (99) FINISH - SEE FINISH SCHEDULE.
- (100) FINISH - SEE FINISH SCHEDULE.

PRODUCT	MANUFACTURER	FINISH	FINISH
REFRIGERATOR - 30"	GE	30" x 24" x 36"	30" x 24" x 36"
FREEZER - 30"	GE	30" x 24" x 36"	30" x 24" x 36"
DISHWASHER - 30"	GE	30" x 24" x 36"	30" x 24" x 36"
RANGE - 30"	GE	30" x 24" x 36"	30" x 24" x 36"
MICROWAVE - 30"	GE	30" x 24" x 36"	30" x 24" x 36"
STOVE - 30"	GE	30" x 24" x 36"	30" x 24" x 36"



FLOOR PLAN  
SCALE: 1/4" = 1'-0"

PROJECT NORTH



449 McLaws Circle  
Williamsburg, VA 23187  
(757) 253-0673  
Fax: (757) 253-2319

## STATEMENT OF PROBABLE CONSTRUCTION COST

Project:	Prince George County Fire Station #5	Date :	10/28/2021
Location:	Prince George County, Virginia	Est. Status:	60%
Description:	Renovation Budget	Job No.:	2220130
GSF:	6,281	Prepared By:	TEAM
Updated By:	TEAM	Checked By:	DFB

DIVISION	DESCRIPTION	EST. QTY.	UNIT	UNIT COST	TOTAL COST	DIVISION TOTALS
<b>SUMMARY OF ESTIMATE</b>						
1	General	6,281	GSF	\$1.99		\$12,500
2	Existing Conditions	6,281	GSF	\$2.56		\$16,087
3	Concrete	6,281	GSF	\$0.00		\$0
6	Wood & Plastics	6,281	GSF	\$0.08		\$500
7	Thermal & Moisture Protection	6,281	GSF	\$4.66		\$29,265
8	Doors & Windows	6,281	GSF	\$6.18		\$38,837
9	Finishes	6,281	GSF	\$4.49		\$28,190
10	Specialties	6,281	GSF	\$2.43		\$15,270
11	Equipment	6,281	GSF	\$0.78		\$4,900
12	Furnishings	6,281	GSF	\$2.36		\$14,800
13	Special Construction	6,281	GSF	\$0.00		\$0
22	Plumbing	6,281	GSF	\$8.52		\$53,495
23	Heating, Ventilating, and Air Conditioning	6,281	GSF	\$29.41		\$184,713
26	Electrical	6,281	GSF	\$11.93		\$74,940
27	Communications	6,281	GSF	\$2.19		\$13,750
28	Fire Alarm/ Mass Notification	6,281	GSF	\$6.23		\$39,135
31	Earthwork	6,281	GSF	\$0.00		\$0
32	Exterior Improvements	6,281	GSF	\$0.00		\$0
33	Utilities	6,281	GSF	\$0.00		\$0
SUBTOTAL CONSTRUCTION COST		6,281	GSF	\$83.81		\$526,381.57
	Division 1: General Requirements			5.00%		\$26,319.08
	Subtotal					\$552,700.65
	General Contractor Overhead & Profit			10.00%		\$55,270.06
	Subtotal					\$607,970.71
	Bonds			1.20%		\$7,295.65
	Subtotal					\$615,266.36
	Construction Contingency			10.00%		\$61,526.64
<b>TOTAL BUILDING BUDGET</b>		<b>6,281</b>	<b>GSF</b>	<b>\$107.75</b>		<b>\$676,793.00</b>