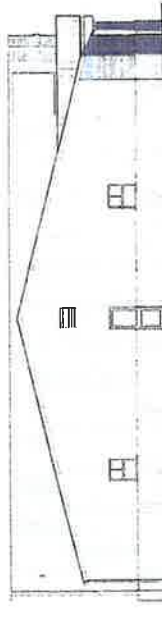


EAST
1/8" = 1'-0"



SOUTH ELEVATION
1/8" = 1'-0"



WEST
1/8" = 1'-0"



NORTH ELEVATION
1/8" = 1'-0"

PRINCE GEORGE FIRE, EMS & EMERGENCY MANAGEMENT
FIRE STATION 5
PRINCE GEORGE, VA

EXTERIOR ELEVATIONS

1/8" = 1'-0" -- 08-20-2020



