

Employee Demographics in Prince George County



The mission of the HR department is to serve our customers, employees and staff with integrity and accountability in a professional and courteous manner.

Our Employees (at a glance)

- Baby Boomers (Born 1943-1964)
- Generation X (Born 1965-1980)
- Millennials – aka Generation Y (Born 1981-1993)
- Generation Z (Born 1994-2012)

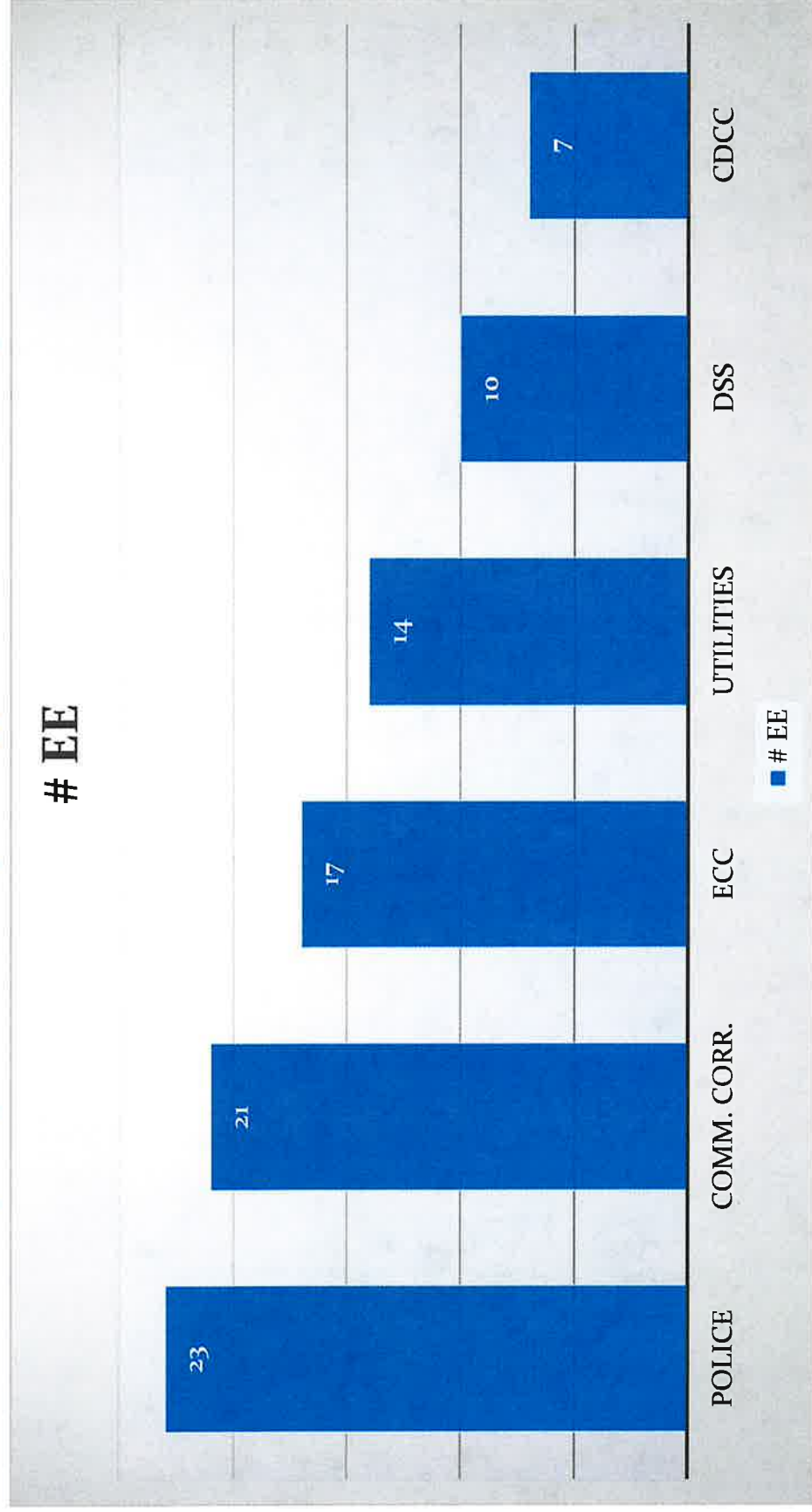




Generational Chart

Who/Born	Number of Employees	Average yrs. Of service in PG
Baby Boomers 1943-1964	51	14
Generation X 1965-1980	108	10.5
Millennials 1981-1993	91	4
Generation Z 1994-2012	13	1

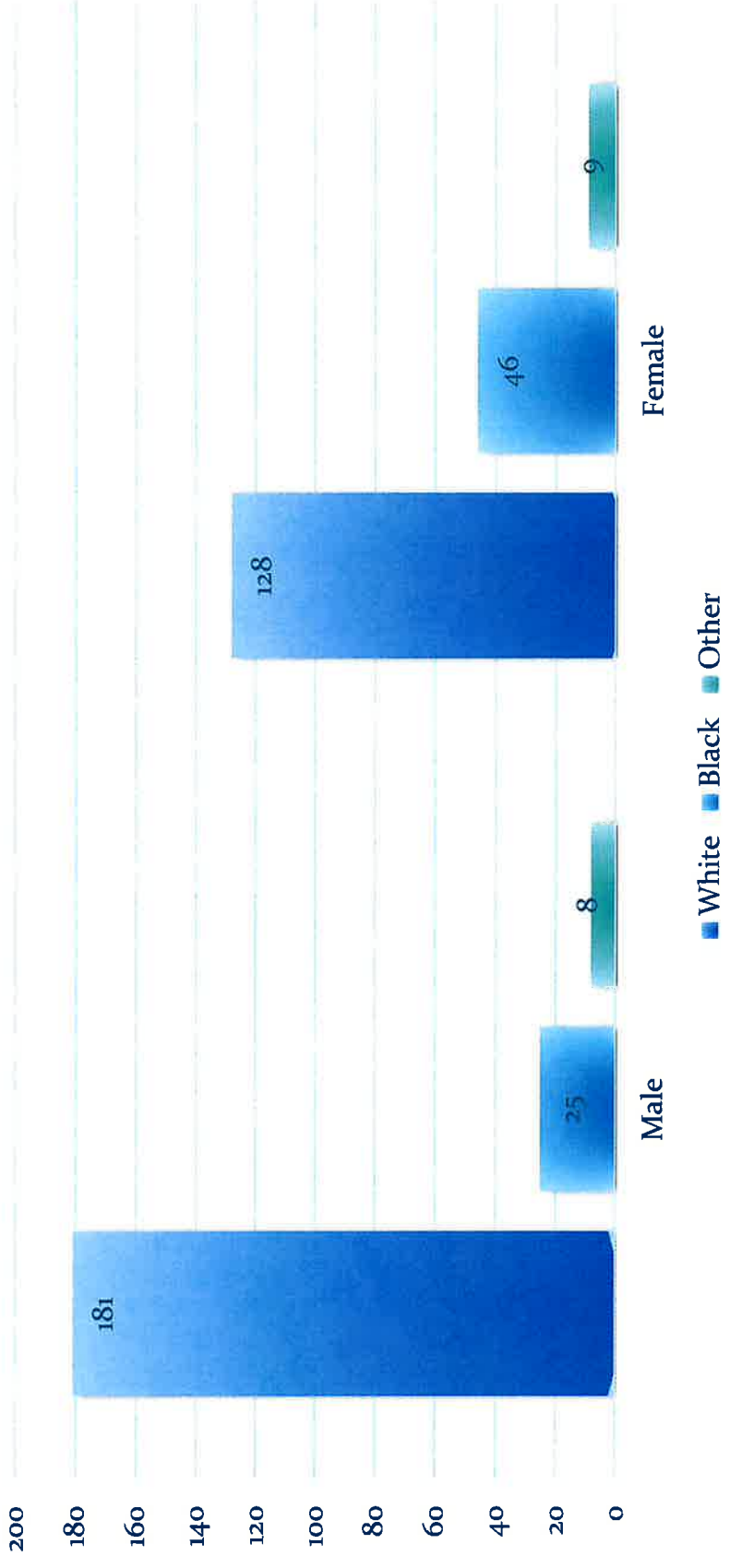
Top 6 Departments with Employee Turnover in 5 yr. period (May '15 to May '20



Total of 146 FT/PTR employees have left the County during this period.

Active Employees (FT & PT) By Gender & Race

EE



Funded Positions in 5 year period

	# Funded Positions				
	FY16-17	FY17-18	FY18-19	FY19-20	FY20-21
Animal Control Assessor	6.5	6.5	6	6	6
Board of Supervisors	5	5	5	5	5
Circuit Court Clerk	0	0	1	1	1
Circuit Court Judge	6	6	6	6	6
Commissioner of Revenue	1	1	1	1	1
	6	6	6	6	6
Commonwealth's Attorney	6.5	6.5	6.5	7.5	7.5
Community Corrections	11.5	12	12	12	12
Community Development & Code Compliance	11.5	12.5	13	10	10
County Administration	3	3	2	2	2
County Attorney	2.5	2.5	2.5	2.5	2.5
County Garage	4	4	4	5	5
Economic Development	3	2	2	2	2
Emergency Communications Center	14	17	17	17	17

Funded Positions in 5 year period

	# Funded Positions				
	FY16-17	FY17-18	FY18-19	FY19-20	FY20-21
Fire & EMS	19	19	23	25	25
Emergency Management	0	0	0.5	0.5	0.5
Fire & EMS Safer Grant	0	6	6	6	6
General Properties	7	7	7	7	7
Human Resources	3	3	3	3	3
Information Technology	6	6	6	6	6
Planning	0	0	0	3	3
Police	60	59.5	59.5	62.5	62.5
Recreation	7	7	7	7	7
Registrar	2.5	2.5	2.5	2.5	2.5
Sheriff	10.5	10.5	10.5	11.5	11.5
Social Services	23.5	24.5	25.5	26.5	26.5
Treasurer	6.5	6.5	6.5	6.5	6.5
Victim Witness	1	1	1	1	1
VJCCA	1	1	1	1	1
Utilities	14	14	14	14	15
Total Funded Positions	241.5	251.5	257	266	267



Questions?