

2020 CENSUS

- I. CENSUS OFFICIAL’S PRESENTATION (Shirley Gilliam, Ronald Brown)
 - A. Outlook for 2020 Census process
 - B. Details of “Complete Count Committee”
 - C. 2010 undercount at Ft. Lee
 - 1. proposed regulation for counting military students on military bases

- II. CENSUS CALENDAR
 - A. April 1, 2020 – Census Count Day
 - B. November/December 2020 – receive census results for Prince George
 - C. March 2021 – Board of Supervisors redistricts County after General Assembly redraws Delegate and Senator Districts
 - D. June 2021 – primary; first election using new election districts

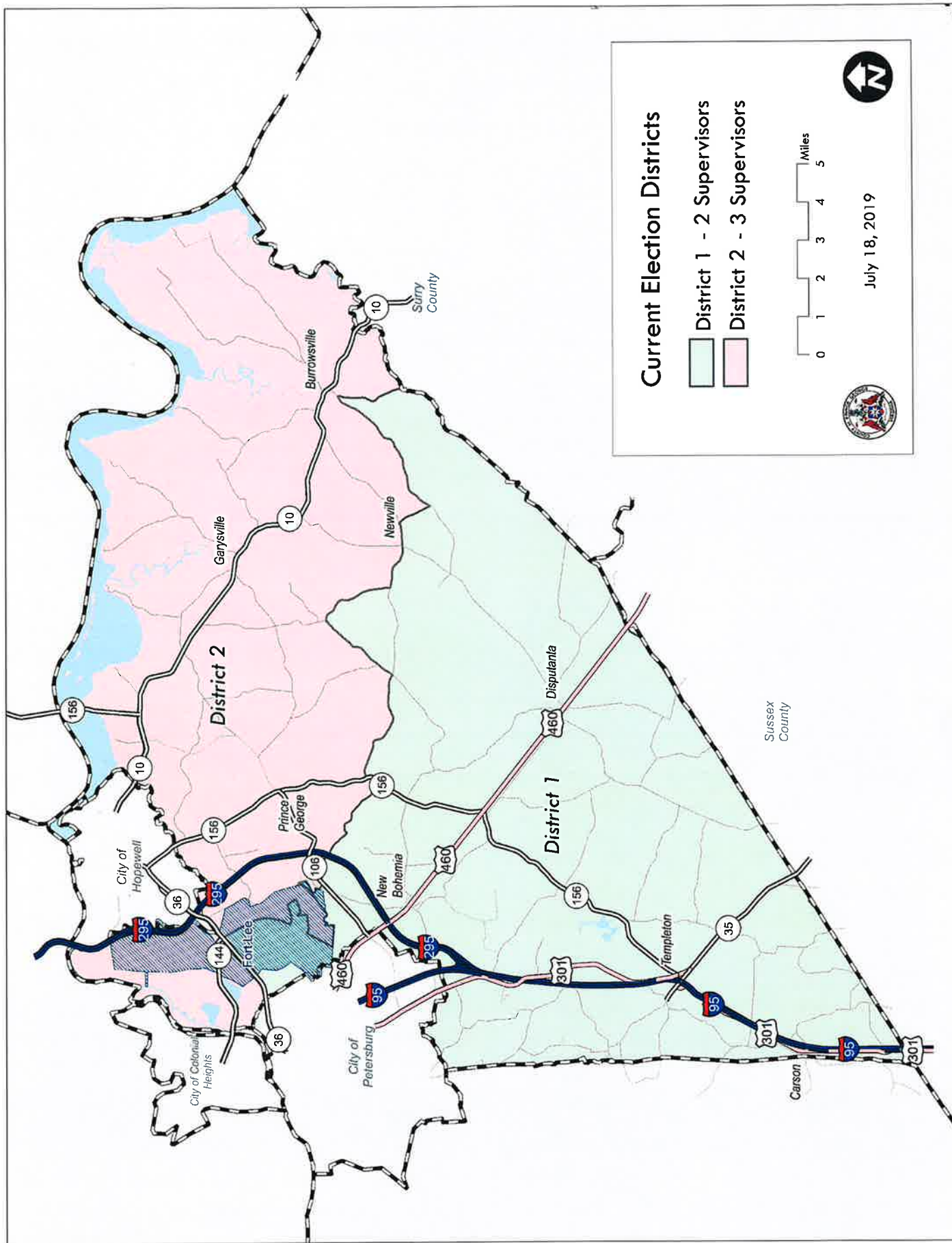
- III. DECISIONS TO BE MADE BY BOARD OF SUPERVISORS
 - A. Whether to exclude federal prison and Riverside Jail from state drawing of election districts
 - 1. Federal Prison # inmates ____
 - 2. Regional Jail # inmates ____
 - B. Redraw current election Districts I and II based on census numbers
 - 1. Current map
 - C. Change composition of Board of Supervisors or transition to 5 single member districts or other election process
 - D. Relevance of Voting Rights Act, 1965

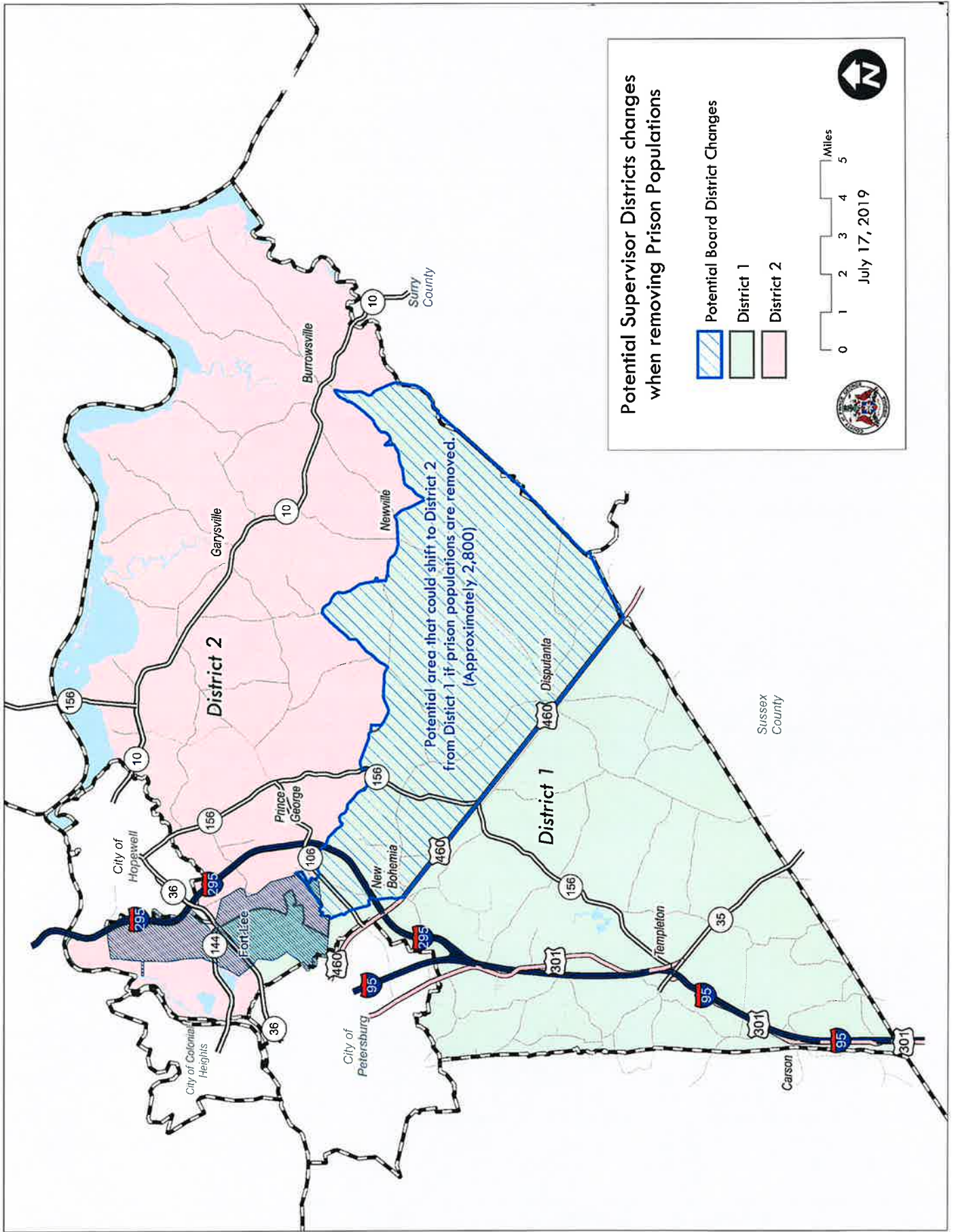
Current Election Districts

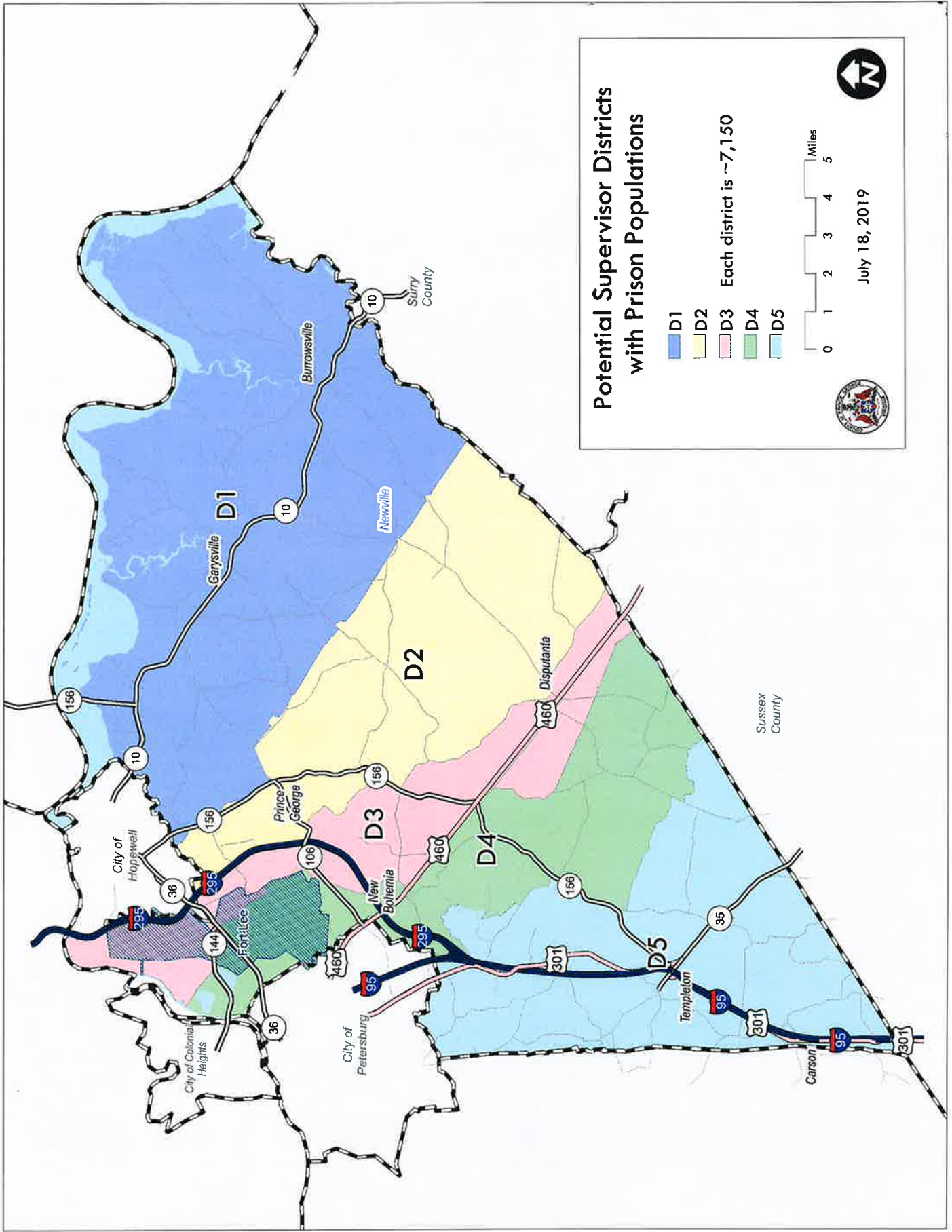
- District 1 - 2 Supervisors
- District 2 - 3 Supervisors

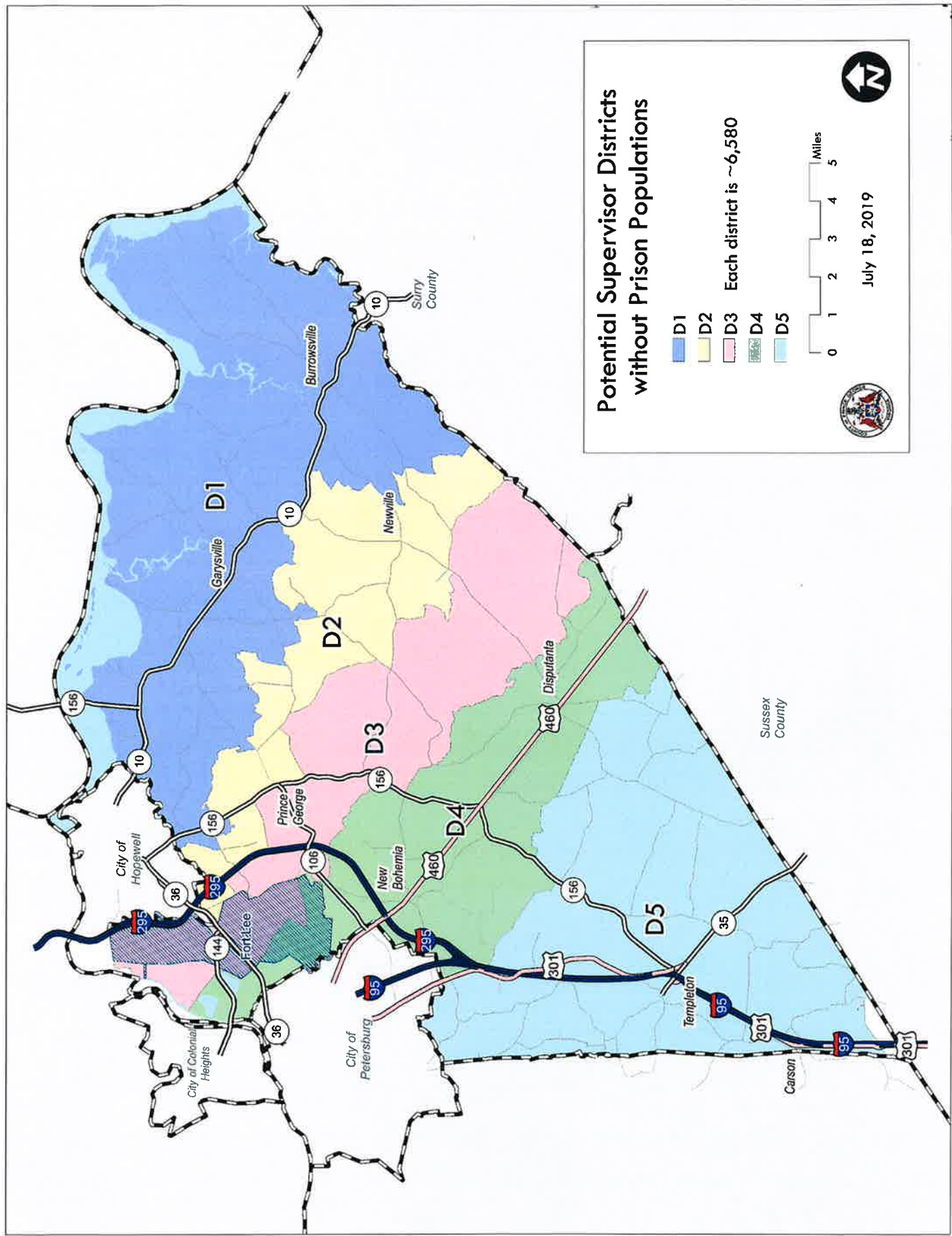


July 18, 2019









Potential Supervisor Districts without Prison Populations

- D1
- D2
- D3
- D4
- D5

Each district is ~6,580



July 18, 2019