

September 12, 2017

A-1 RESUME

Discussion of Plans for the Courthouse Basement Buildout

County staff has been working with Mr. Shane Rollison, AIA, of HVC CHENAULT Architectural Corp., on the design of the Courthouse Basement buildout project. The design incorporates a new J&DR courtroom, judge's offices, holding area, and additional ancillary Courts facilities and Sheriff areas. Before putting the project out to bid, staff and the architect would like to review the design with the Board and discuss the alternate buildout of the complete basement area.

Included for the Board's consideration and review are the base bid and additive alternate floor plans, a colorized furniture plan, the large scale drawing of the holding area and the enlarged courtroom plan with interior elevations. Also included are photos of the existing space. Mr. Rollison and county staff will review the plans with the Board and will be available for questions.

HVC · CHENAULT
 17000 Jefferson Avenue • Glenwood, VA 22223 (974) 222-9900 • (800) 473-7222
 Hvac & Mechanical Division

LOWER LEVEL BUILD OUT
 PRINCE GEORGE COURTHOUSE
 601 COURTS DR., PRINCE GEORGE, VIRGINIA

Proj No.	5606
Drawn by	CRB
Checked by	SMR
Date	07-28-2017
Project	

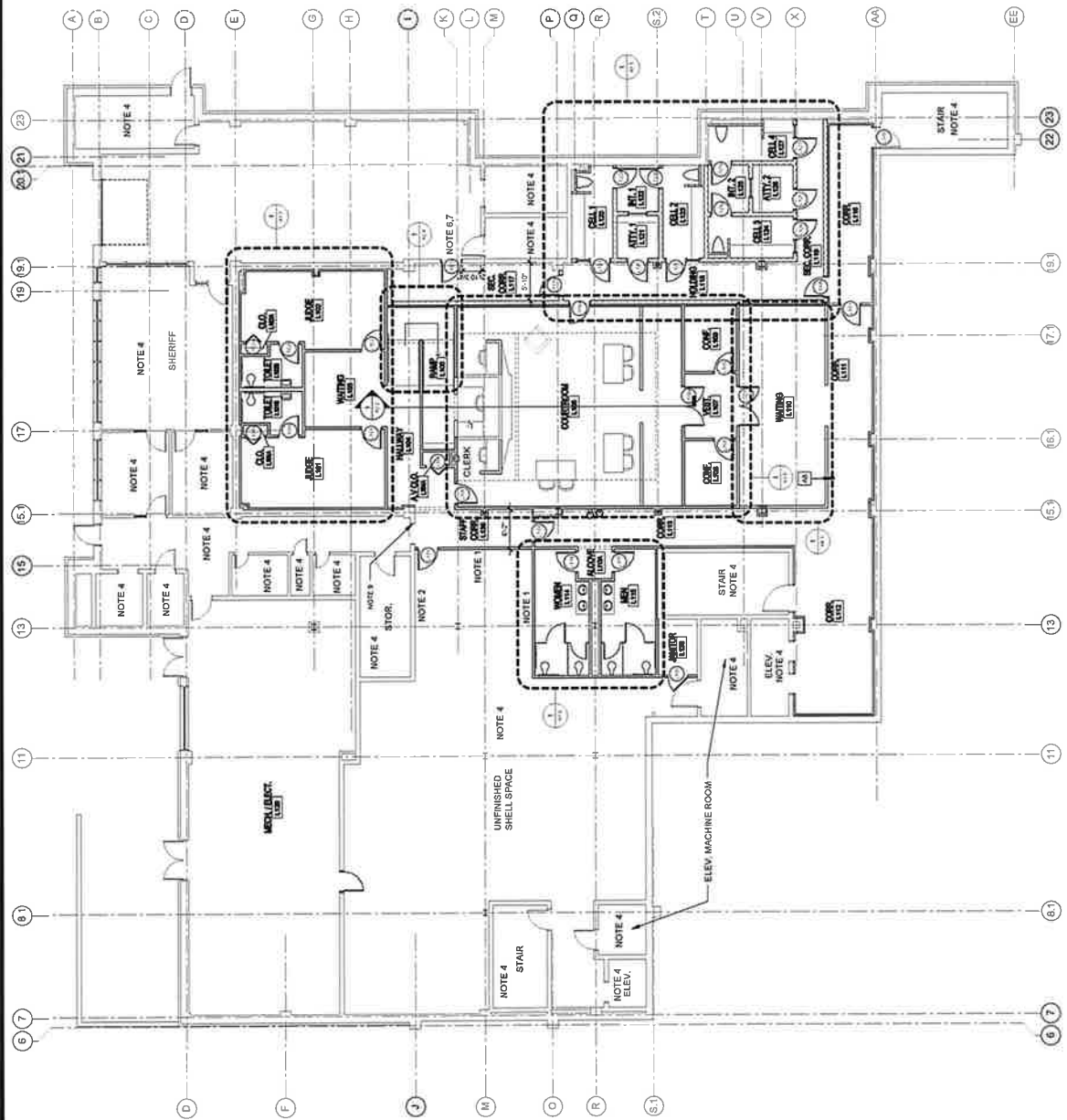
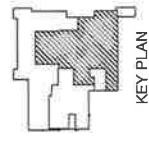
CONTRACT NO. 2017-B-000001
 ALL RIGHTS RESERVED

LOWER LEVEL FLOOR
 PLAN - BASE BID

A1.1

PROGRESS PRINT

- GENERAL NOTES:**
1. PAINT TO BE APPLIED TO ALL EXPOSED CEILING, WALLS & FLOOR SURFACES IN UNFINISHED SHELL SPACE TO BE LOCATED AS DESIGNATED BY THE SHERIFFS DEPARTMENT, MECHANICAL, PLUMBING & ELECTRICAL FOR NEW WORK IN BASE BID AND ADDITIVE ALTERNATE NO. 1.
 2. NO WORK IN THIS AREA.
 3. NEW MASONRY WALLS, BLOCKS, POS INDORUS REPLACEMENT AND NEW CONCRETE FLOOR SLAB.
 4. REPAIR WALL FROM COLUMN "R" TO COLUMN "M".
 5. REPAIR HARDWARE AT DOORS L116.
 6. PATCH FRAME WHERE DOOR L139 REMOVED.



1 LOWER LEVEL FLOOR PLAN - BASE BID
 SCALE: 1/8" = 1'-0"

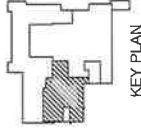
Proj. no.	5608
Drawn by	CCB
Checked by	SK
Date	03.26.2017
Project	

ALL RIGHTS RESERVED
 COPYRIGHT © 2017 HVC CHENAULT

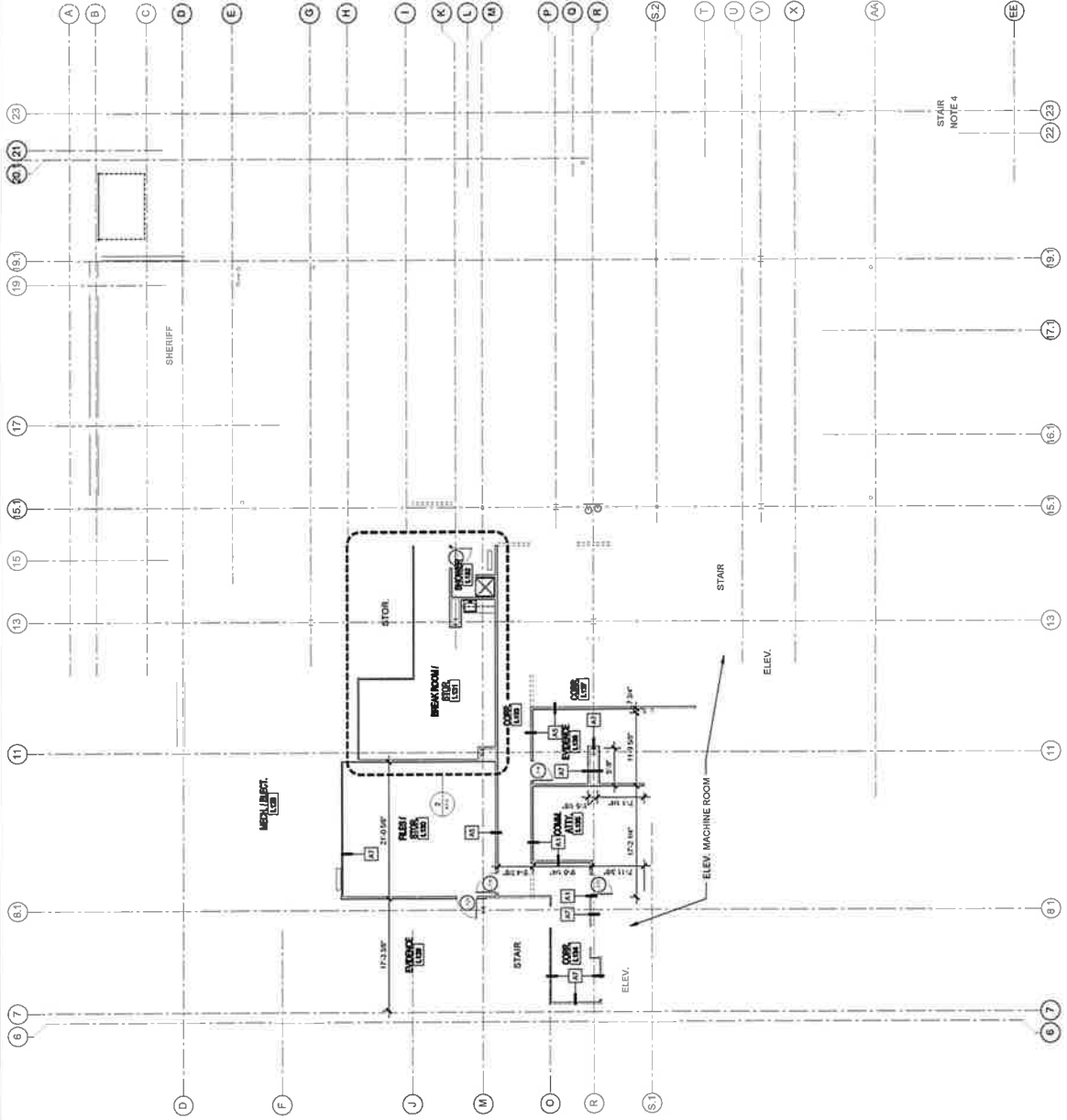
LOWER LEVEL FLOOR
 PLAN - ADD ALT

A1.2

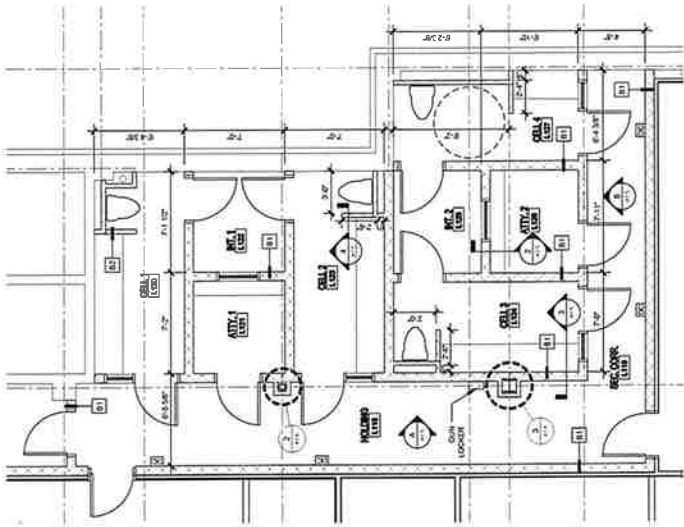
PROGRESS PRINT



- GENERAL NOTES:
1. ALL WORK SHALL BE PAINT (1/8" MIN) EXPOSED GMS
 2. RELOCATE SAFE TO UNFINISHED SHELL SPACE TO A LOCATION TO A DOOR L131 AS DESIGNATED BY THE SHERIFFS DEPARTMENT.
 3. ELECTRICAL WORK SHALL BE PERFORMED IN ACCORDANCE WITH THE SHERIFFS DEPARTMENT'S ELECTRICAL FOR NEW WORK IN BASE BID AND ADDITIVE ALTERNATE NO. 1.
 4. NO WORK IN THIS AREA.
 5. PROVIDE NEW DOORS FOR FINISHING.
 6. REPLACE AND NEW CONCRETE FLOOR SLAB.
 7. NEW OPENING IN MASONRY WALL.
 8. REPAIR WALL FROM COLUMN "B" TO COLUMN "M".
 9. PROVIDE NEW HARDWARE AT DOORS L116 & L139.

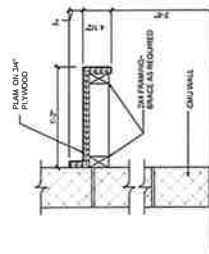


1 LOWER LEVEL FLOOR PLAN - ADD ALT
 SCALE: 1/8" = 1'-0"
 AS SHOWN ON SHEET A1.2
 UNLESS OTHERWISE NOTED



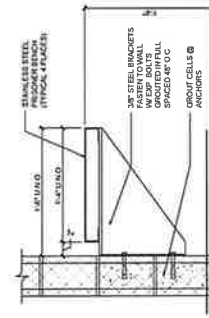
1 ENLARGED HOLDING AREA PLAN
SCALE: 1/8" = 1'-0"

ALL DIMENSIONS ARE TO FACE OF CMU OR FACE OF STUD U.N.O.
NOTE: CELL 4 IS THE DESIGNATED ADA CELL.
☐ = DOOR CONTROL STATION (INTERVIEW ROOM)



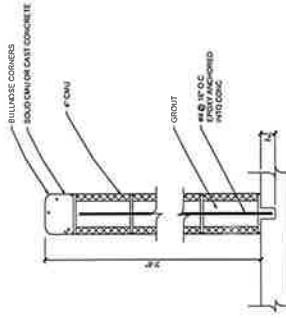
2 COUNTER DETAIL
SCALE: 1/12" = 1'-0"

TYPICAL OF 2 PLACES



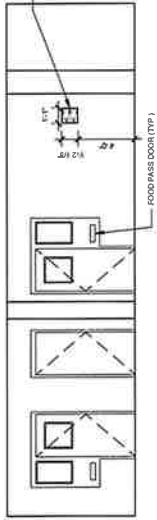
3 BENCH DETAIL
SCALE: 1/12" = 1'-0"

TYPICAL OF 4 PLACES



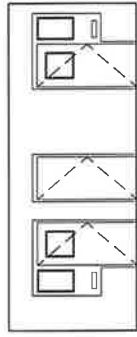
3 LOW WALL DETAIL
SCALE: 1/12" = 1'-0"

TYPICAL OF 4 PLACES



A HOLDING L118 ELEVATION
SCALE: 1/8" = 1'-0"

DOOR LATCH ORIENTATION
SEE DRAWING LOCKER
FOR APPROVED EQUAL.



B SEC CORR L119 ELEVATION
SCALE: 1/8" = 1'-0"

PROGRESS PRINT

proj no	56506
drawn by	CSRB
checked by	SMB
date	07/26/2017
project	

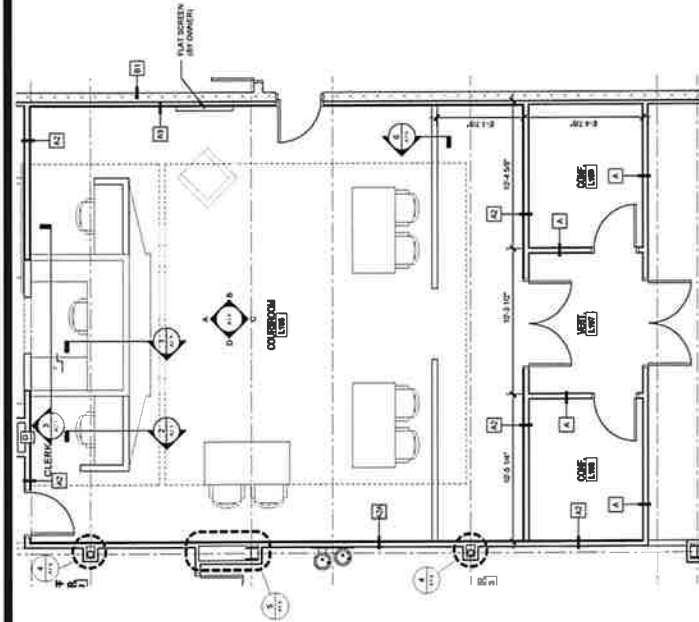
CONTRACT NO. 2015FAC00000000000
ALL RIGHTS RESERVED

ENLARGED HOLDING
AREA PLAN

A1.5

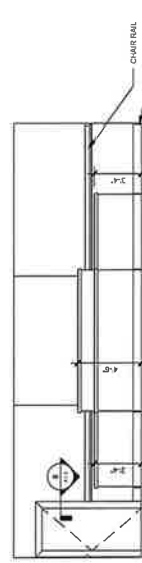
LOWER LEVEL BUILD OUT
PRINCE GEORGE COURTHOUSE
6601 COURTS DR, PRINCE GEORGE, VIRGINIA

HVC · CHENAULT
17000 Jefferson Avenue, Suite 100, Richmond, VA 23223 (804) 221-5500 (F) 804-221-7268

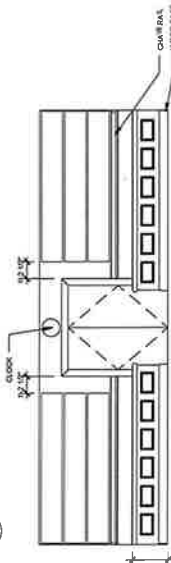


1 ENLARGED COURTROOM PLAN
SCALE: 1/8" = 1'-0"

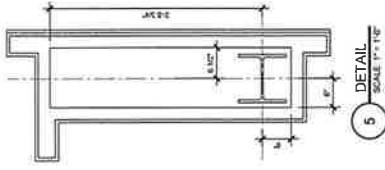
ALL DIMENSIONS ARE TO FACE
FURNITURE DIMENSIONS (CHAIRS & TABLES) PROVIDED
UNDER SEPARATE PROCUREMENT CONTRACT.



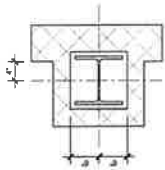
A COURTROOM ELEVATION
SCALE: 1/8" = 1'-0"



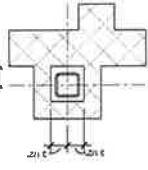
B COURTROOM ELEVATION
SCALE: 1/8" = 1'-0"



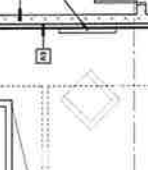
2 DETAIL
SCALE: 1" = 1'-0"



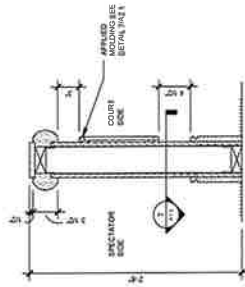
3 DETAIL
SCALE: 1" = 1'-0"



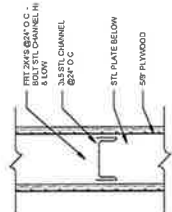
4 DETAIL
SCALE: 1" = 1'-0"



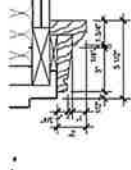
5 DETAIL
SCALE: 1" = 1'-0"



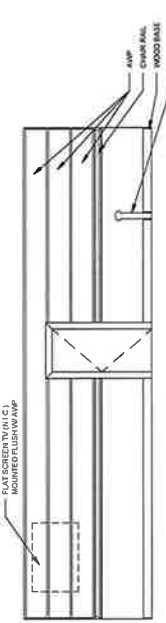
6 DETAIL
SCALE: 1/8" = 1'-0"



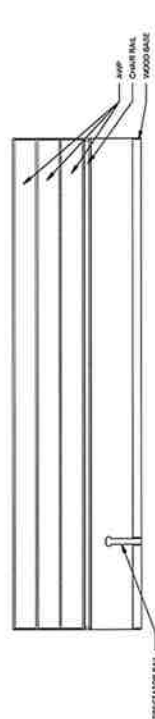
7 SECTION
SCALE: 3/8" = 1'-0"



8 WOOD DOOR TRIM DETAIL
SCALE: 3/8" = 1'-0"



C COURTROOM ELEVATION
SCALE: 1/8" = 1'-0"



D COURTROOM ELEVATION
SCALE: 1/8" = 1'-0"

PROGRESS PRINT

proj no	25606
designed by	CRB
checked by	JBR
date	01/28/2017
revision	

CONTRACT NO. 271716-0000-0000
ALL RIGHTS RESERVED

ENLARGED COURTROOM - PLAN AND ELEVATIONS

A1.6

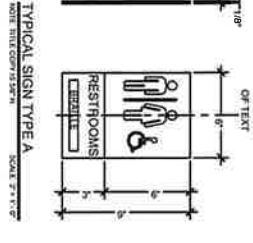
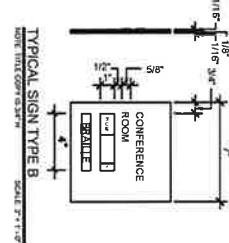
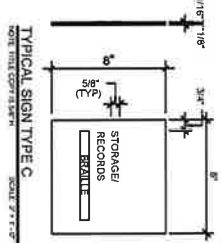
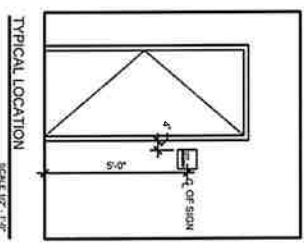
HVC • CHENAULT
1710 Main Street, Suite 100, Lynchburg, VA 24502
Phone: 434-975-2222 Fax: 434-975-2223
www.hvcchenaault.com

601 COURTS DR. PRINCE GEORGE, VIRGINIA
LOWER LEVEL BUILD OUT
PRINCE GEORGE COURTHOUSE



1 SIGNAGE PLAN - BASE BID
SCALE: 1/8" = 1'-0"

SCALE: 1/8" = 1'-0"
NORTH



PROGRESS PRINT

FURNITURE PLAN
UDA 09/01/17

LOWER LEVEL BUILD OUT
PRINCE GEORGE COURTHOUSE
6601 COURTS DR. PRINCE GEORGE, VIRGINIA

HVC · CHENAULT
Engineering • Construction • Architecture
 1710 east franklin street suite 100 richmond va 23221 (p) 804 325 9900 (f) 804 323 7268







